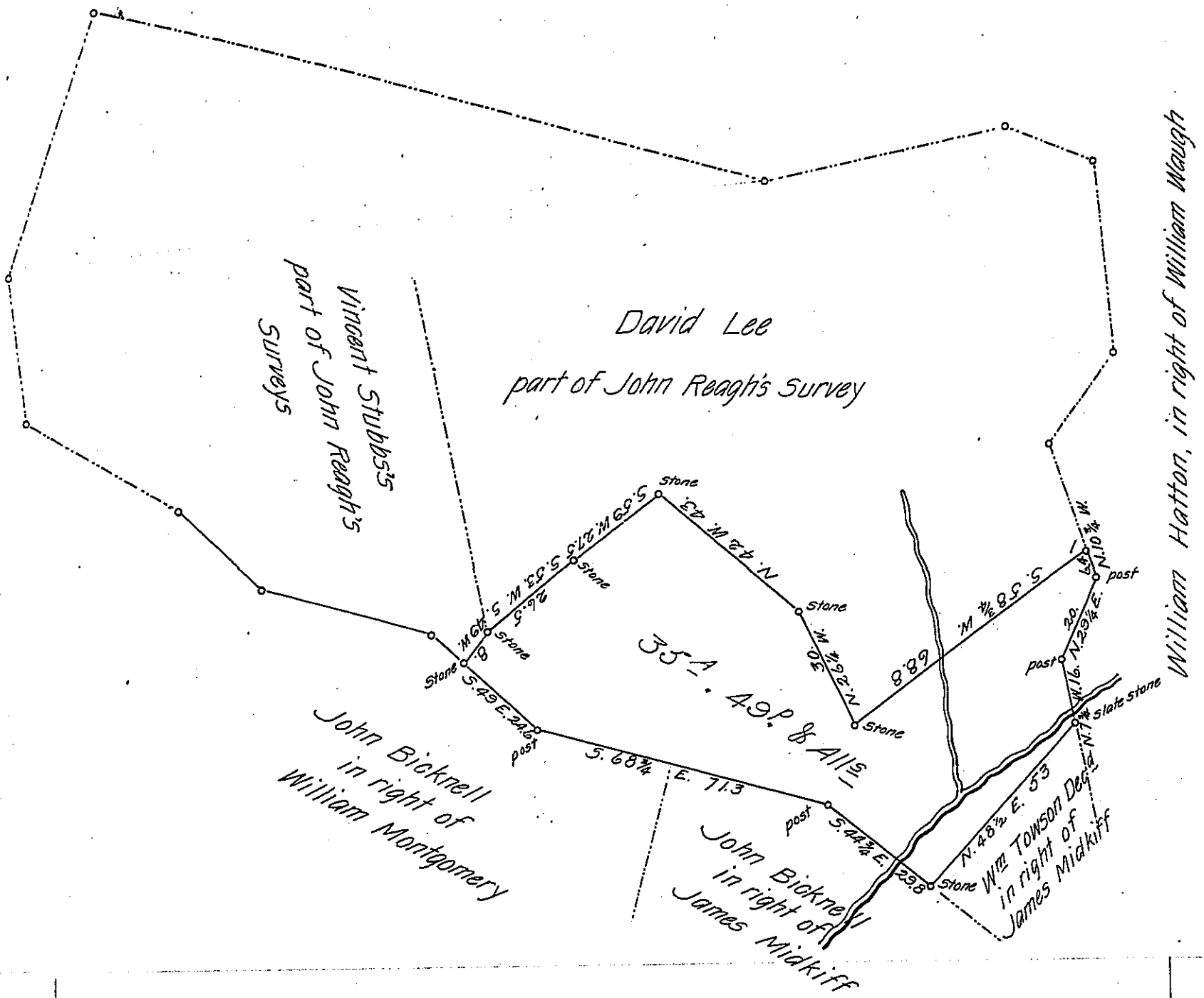


FORM No. 1.



The above Draught represents a tract of land in Fulton township, Lancaster County, containing 35 Acres 49 perches and the Usual Allowance of Six per Cent for Roads & C. Being part of 205 A<sup>±</sup> 20 p<sup>±</sup> & Allowance surveyed to John Reagh on his Warrant dated the 18<sup>th</sup> day of May 1749. The above part surveyed for John Bicknell, October 13<sup>th</sup> 1862.

by John G. Lewis.

To Henry Souther Esq. }  
Surveyor General. }

Surv<sup>r</sup> for

Lanc<sup>r</sup> Co<sup>y</sup>.

IN TESTIMONY that the above is a copy of the original remaining on file in the Department of Internal Affairs of Pennsylvania, made conformably to an Act of Assembly approved the 16th day of February, 1833, I have hereunto set my Hand and caused the Seal of said Department to be affixed at Harrisburg, this second day of October 1906.

*Joseph Brown*  
Secretary of Internal Affairs.